

Hampshire Water Transfer and Water Recycling Project Environmental Statement - Figure 8.51 Watercourses and watercourse crossings

VOLUME NUMBER: 6

PLANNING INSPECTORATE SCHEME NUMBER: WA010002

APPLICATION DOCUMENT REFERENCE: 6.3

APFP REGULATION: 5(2)(a)

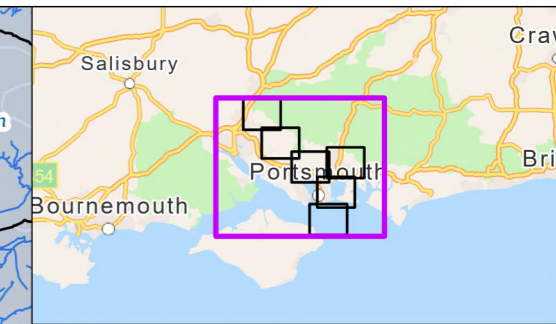
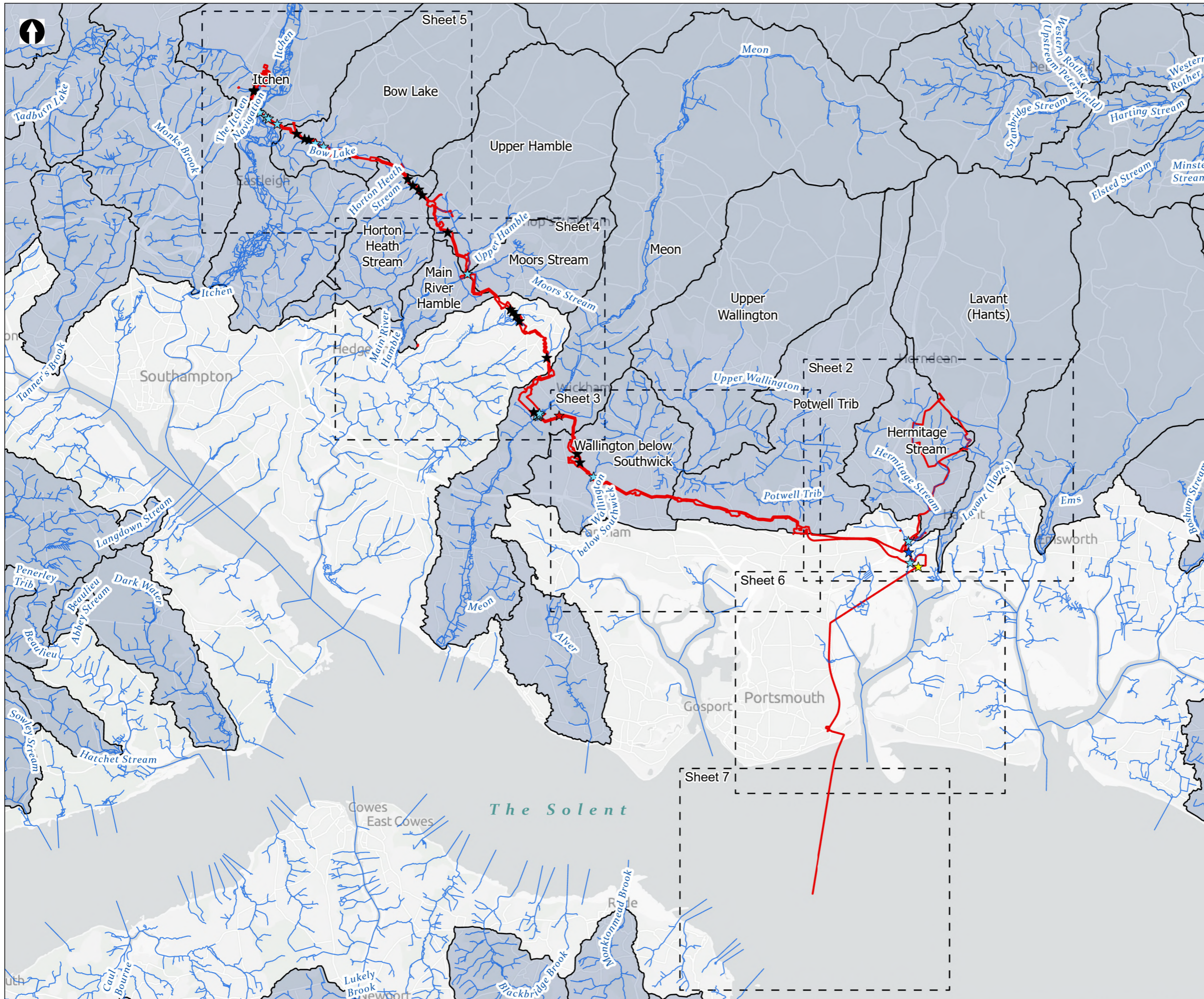
May 2026

Version 0



from
**Southern
Water** 

The Southern Water logo consists of the text 'Southern Water' in a dark blue, sans-serif font. To the right of the text is a graphic element consisting of three stylized, wavy lines in shades of blue, representing water. The word 'from' is positioned above 'Southern' in a smaller, lighter blue font.



- Order Limits
- Sheet Extent Boxes 1:30K
- Watercourse
- WFD**
- River Water Body Catchment
- Watercourse Crossing**
- ★ Trenchless
- ★ Open cut
- ★ Construction compounds
- ★ Construction accesses
- ★ Other interface

Coordinate system: British National Grid; Datum: OSGB 1936
 Data sources: © Crown copyright and database rights 2026 Ordnance Survey 0100031673. Sources: Esri, TomTom, Garmin, FAO, NOAA, USGS, © OpenStreetMap contributors, and the GIS User Community, Contains OS data © Crown Copyright and database right 2026. Contains data from OS Zoomstack

PROJECT TITLE
 Hampshire Water Transfer and Water Recycling Project

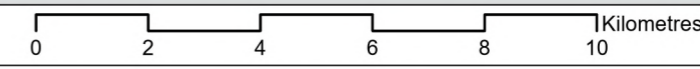


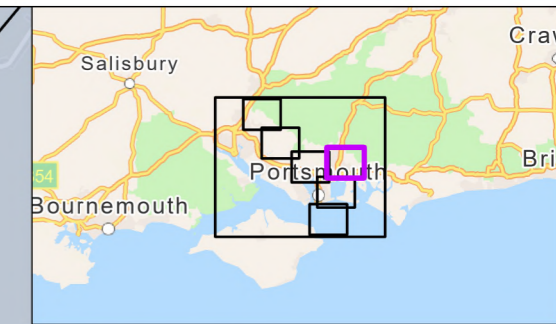
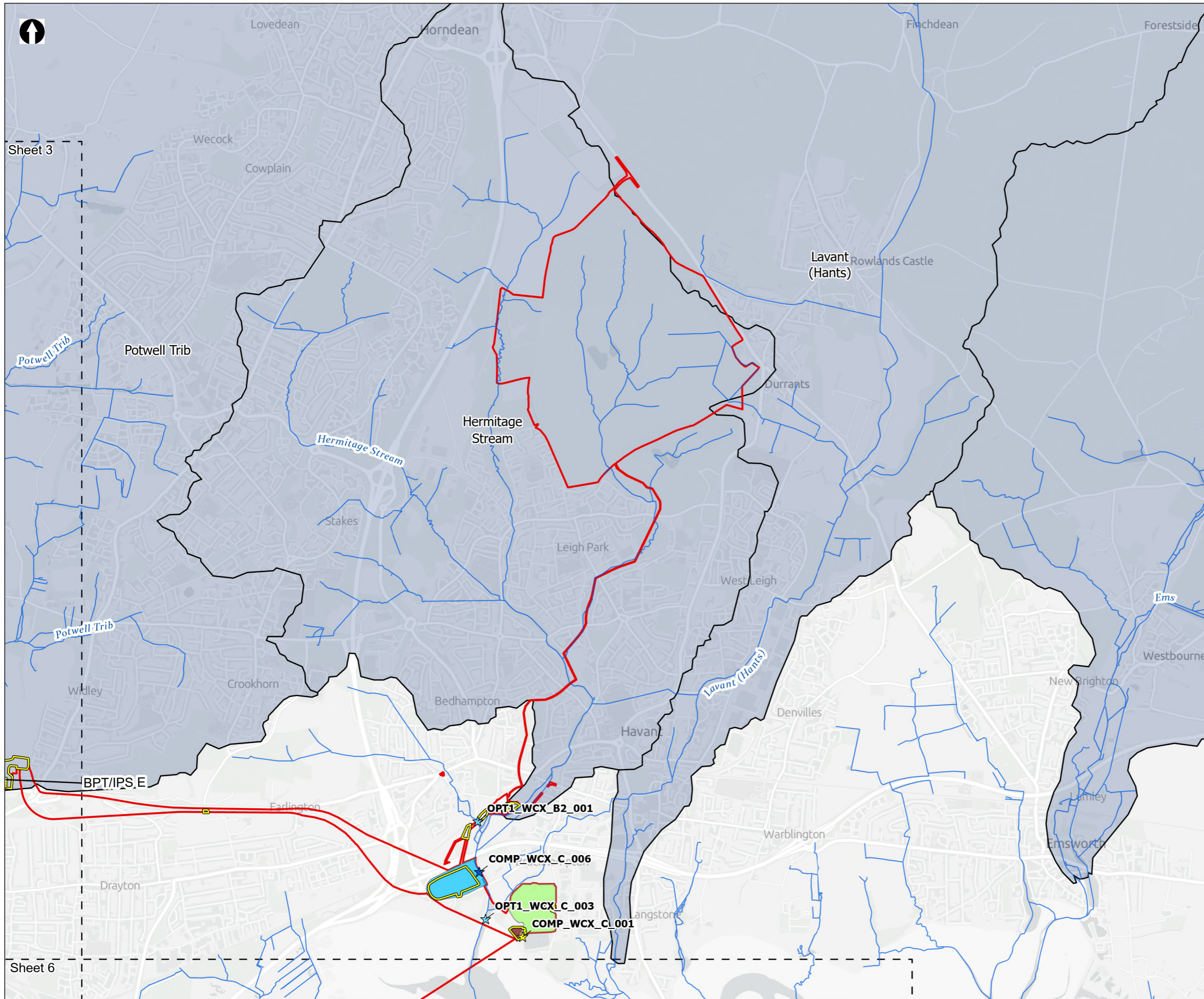
Figure 8.51
 Watercourses and watercourse crossings
 Sheet 1 of 7

Drawn MW	GIS Checked DL	Checked MP	Approved AK
Scale at A3 1:135,000	Status Final	Revision 05	Security STD

Drawing Number
PC5223-RHD-ES-ZZ-D-Z-0075

© Southern Water 2026
 This document is issued for the party which commissioned it and for specific purposes connected with the captioned project only. It should not be relied upon by any other party or used for any other purpose. We accept no responsibility for the consequences of this document being relied upon by any other party, or being used for any other purpose, or containing any error or omission which is due to an error or omission in data supplied to us by other parties.





Order Limits
 Sheet Extent Boxes 1:30K

Proposed Development components

- Budds Farm Wastewater Treatment Works
- Limits of Deviation for Budds Farm Pumping Station
- Water Recycling Plant site
- Construction compounds
- Watercourse

WFD

- River Water Body Catchment

Above Ground Plant

- Break Pressure Tank & Intermediate Pumping Station

Watercourse Crossing

- Trenchless
- Construction compounds
- Other interface

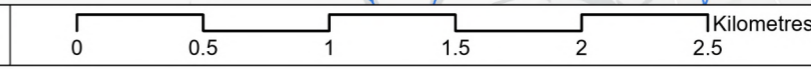
Coordinate system: British National Grid; Datum: OSGB 1936
 Data sources: © Crown copyright and database rights 2026 Ordnance Survey 0100031673. Sources: Esri, TomTom, Garmin, FAO, NOAA, USGS, © OpenStreetMap contributors, and the GIS User Community, Contains OS data © Crown Copyright and database right 2026. Contains data from OS Zoomstack

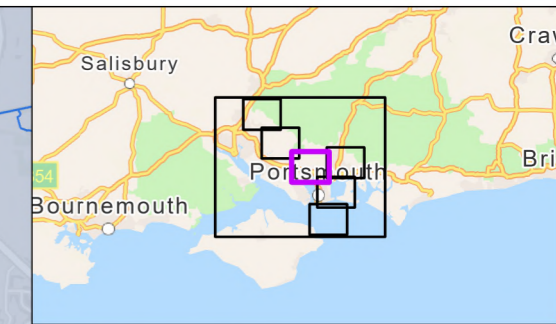
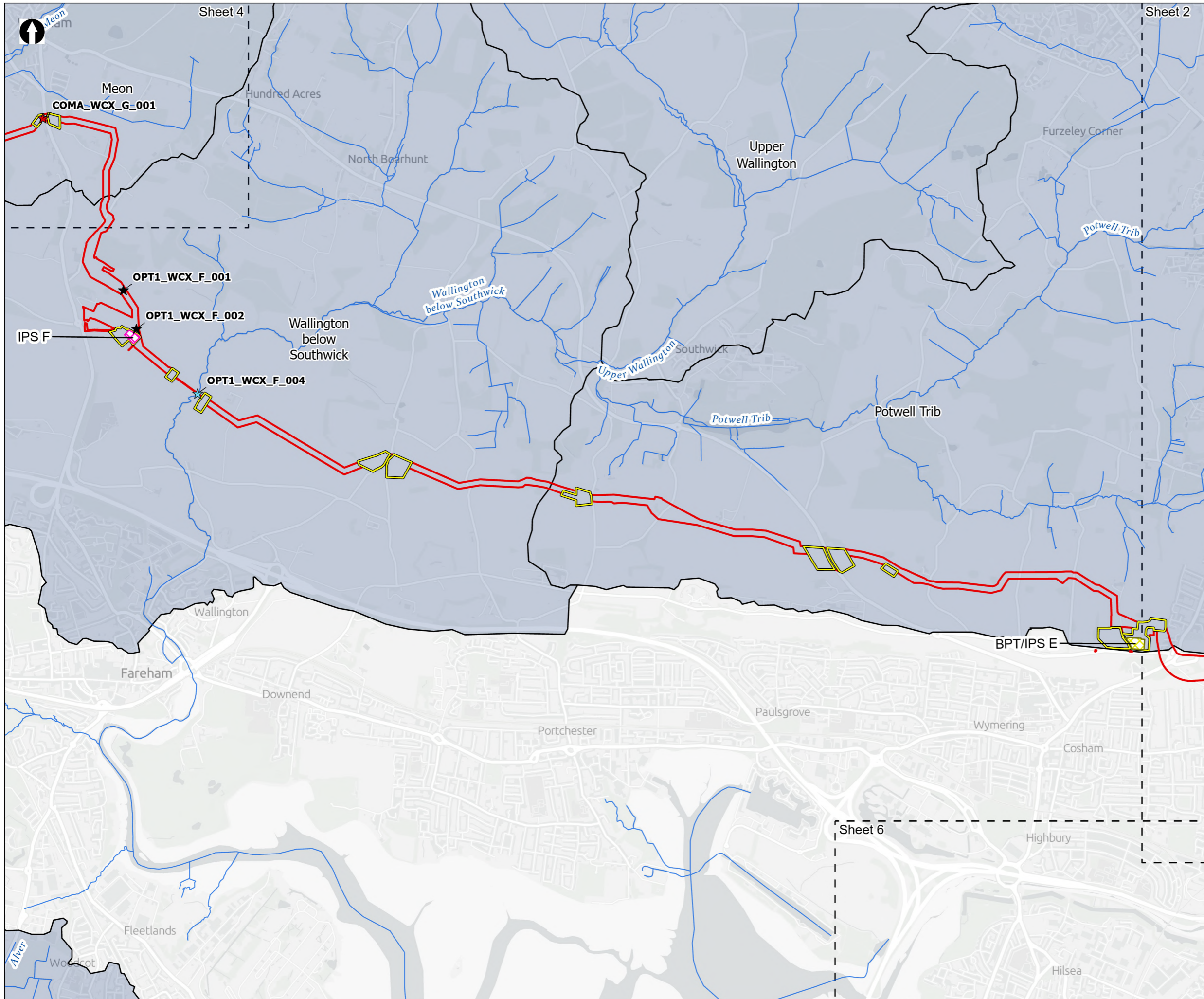
PROJECT TITLE
 Hampshire Water Transfer and Water Recycling Project



Figure 8.51
 Watercourses and watercourse crossings
 Sheet 2 of 7

Drawn MW	GIS Checked DL	Checked MP	Approved AK
Scale at A3 1:30,000	Status Final	Revision 05	Security STD





Order Limits
 Sheet Extent Boxes 1:30K
 Construction compounds
 Watercourse

WFD
 River Water Body Catchment

Above Ground Plant
 Break Pressure Tank & Intermediate Pumping Station
 Intermediate Pumping Station

Watercourse Crossing
 Trenchless
 Open cut
 Construction accesses

Coordinate system: British National Grid; Datum: OSGB 1936
 Data sources: © Crown copyright and database rights 2026 Ordnance Survey 0100031673. Sources: Esri, TomTom, Garmin, FAO, NOAA, USGS, © OpenStreetMap contributors, and the GIS User Community, Contains OS data © Crown Copyright and database right 2026. Contains data from OS Zoomstack

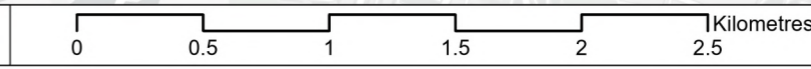
PROJECT TITLE
 Hampshire Water Transfer and Water Recycling Project

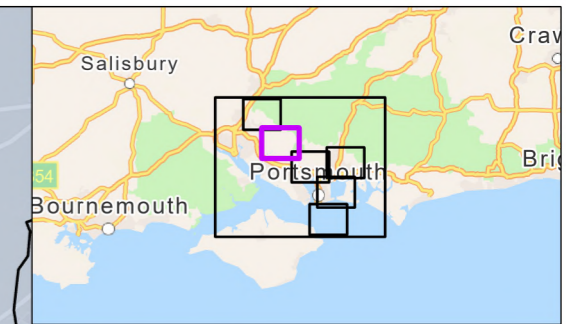
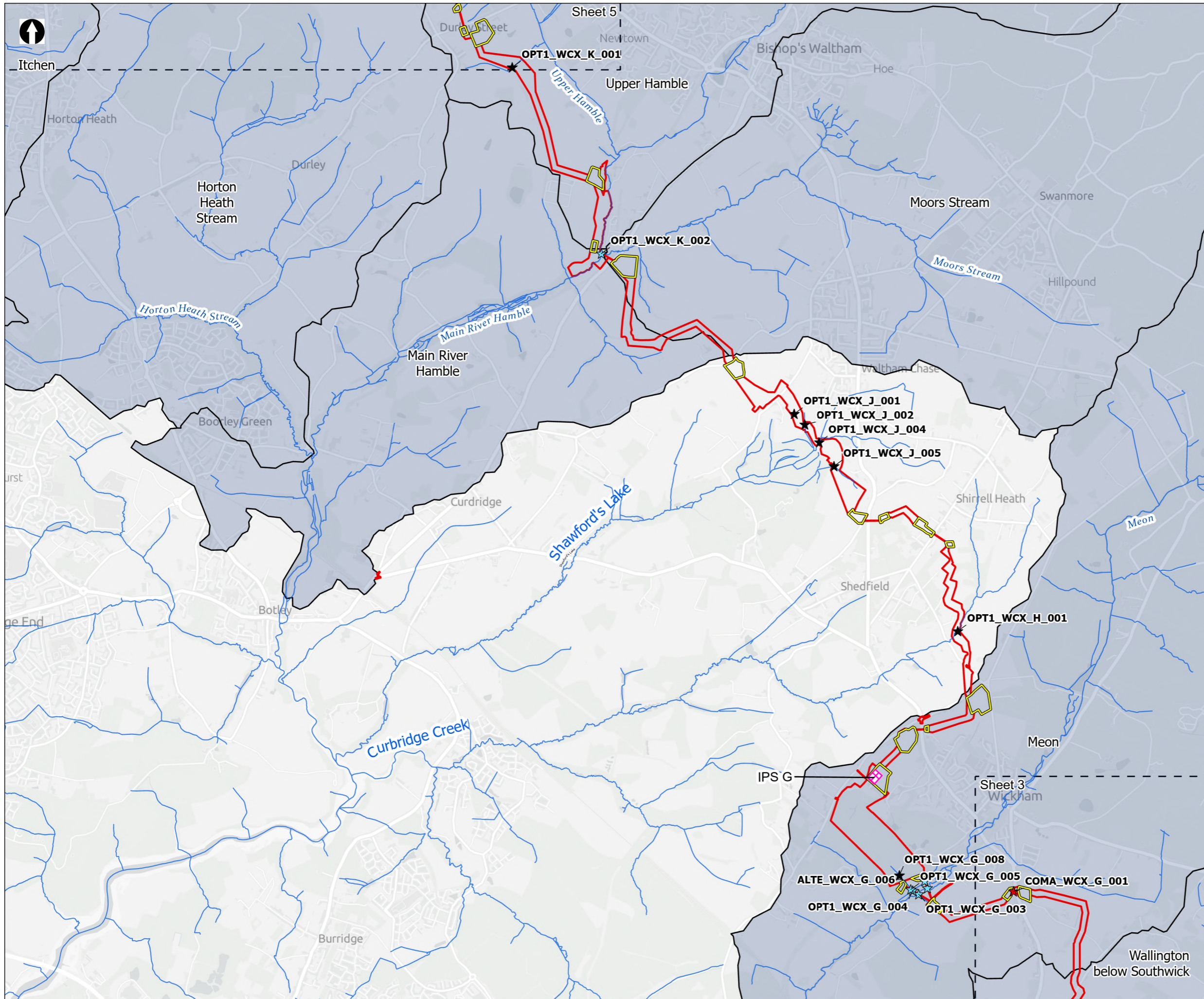


Figure 8.51
 Watercourses and watercourse crossings
 Sheet 3 of 7

Drawn MW	GIS Checked DL	Checked MP	Approved AK
Scale at A3 1:30,000	Status Final	Revision 05	Security STD

Drawing Number
PC5223-RHD-ES-ZZ-D-Z-0075





Order Limits
 [Red line symbol]

Sheet Extent Boxes 1:30K
 [Dashed line symbol]

Construction compounds
 [Yellow polygon symbol]

Watercourse
 [Blue line symbol]

WFD
 [Grey shaded area symbol] River Water Body Catchment

Above Ground Plant
 [Pink hatched area symbol] Intermediate Pumping Station

Watercourse Crossing
 [Blue star symbol] Trenchless
 [Black star symbol] Open cut
 [Red star symbol] Construction accesses

Coordinate system: British National Grid; Datum: OSGB 1936
 Data sources: © Crown copyright and database rights 2026 Ordnance Survey 0100031673. Sources: Esri, TomTom, Garmin, FAO, NOAA, USGS, © OpenStreetMap contributors, and the GIS User Community, Contains OS data © Crown Copyright and database right 2026. Contains data from OS Zoomstack

PROJECT TITLE
 Hampshire Water Transfer and Water Recycling Project

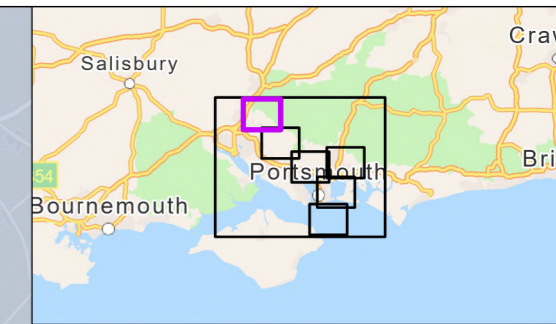
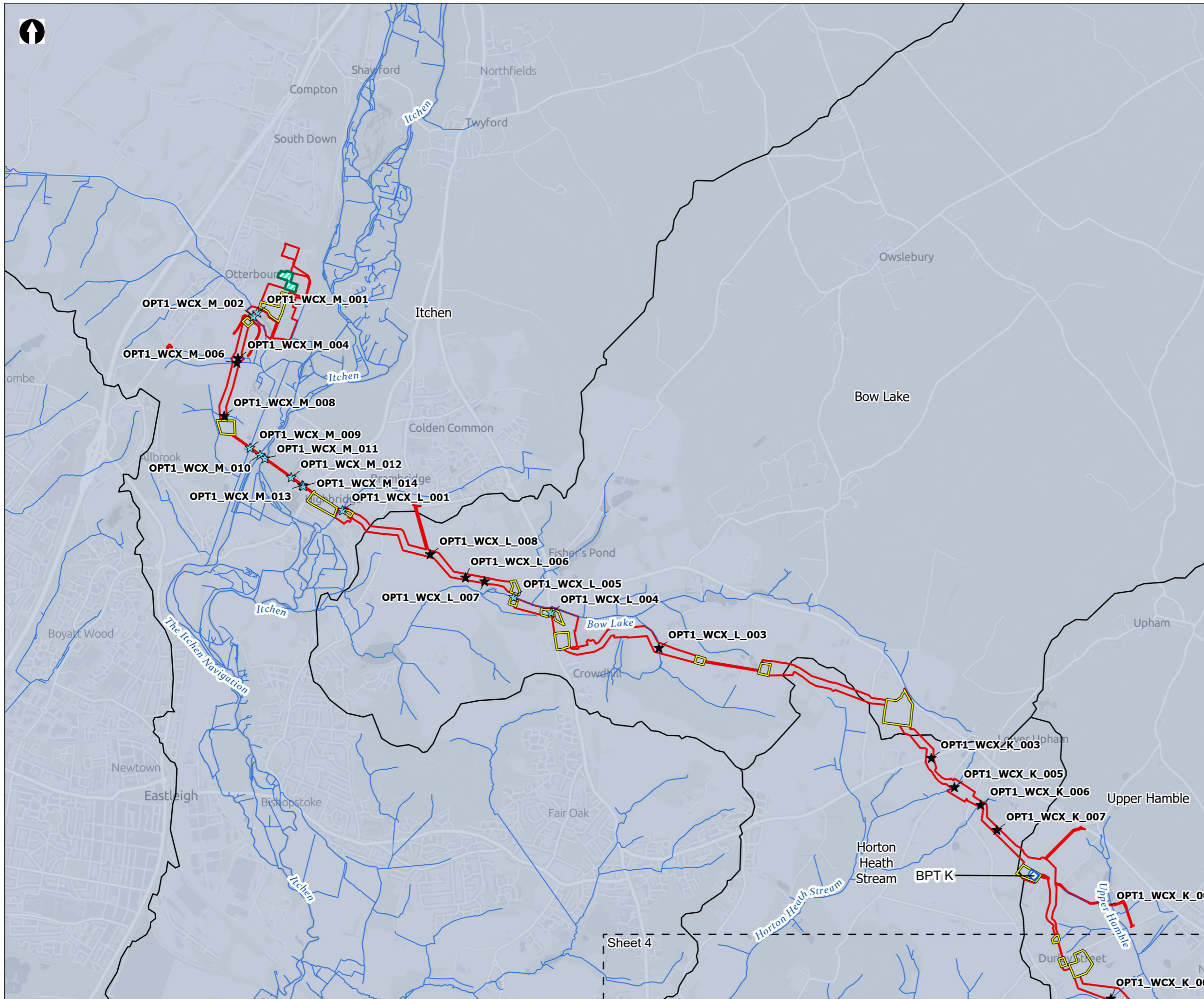


Figure 8.51
 Watercourses and watercourse crossings
 Sheet 4 of 7

Drawn MW	GIS Checked DL	Checked MP	Approved AK
Scale at A3 1:30,000	Status Final	Revision 05	Security STD

Drawing Number
PC5223-RHD-ES-ZZ-D-Z-0075

© Southern Water 2026
 This document is issued for the party which commissioned it and for specific purposes connected with the captioned project only. It should not be relied upon by any other party or used for any other purpose. We accept no responsibility for the consequences of this document being relied upon by any other party, or being used for any other purpose, or containing any error or omission which is due to an error or omission in data supplied to us by other parties.



Order Limits
 [Red outline] Order Limits

Sheet Extent Boxes 1:30K
 [Dashed line] Sheet Extent Boxes 1:30K

Construction compounds
 [Yellow rectangle] Construction compounds

Limits of Deviation for Otterbourne INNS Treatment Plant
 [Green hatched area] Limits of Deviation for Otterbourne INNS Treatment Plant

Watercourse
 [Blue line] Watercourse

WFD
 [Grey outline] River Water Body Catchment

Above Ground Plant
 [Blue hatched rectangle] Break Pressure Tank

Watercourse Crossing
 [Blue star] Trenchless
 [Black star] Open cut

Coordinate system: British National Grid; Datum: OSGB 1936
 Data sources: © Crown copyright and database rights 2026 Ordnance Survey 0100031673. Sources: Esri, TomTom, Garmin, FAO, NOAA, USGS, © OpenStreetMap contributors, and the GIS User Community, Contains OS data © Crown Copyright and database right 2026. Contains data from OS Zoomstack

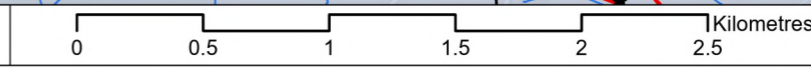
PROJECT TITLE
 Hampshire Water Transfer and Water Recycling Project

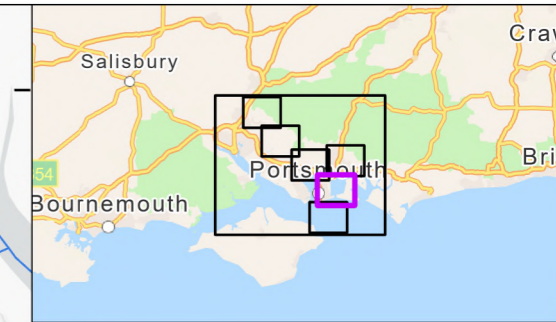
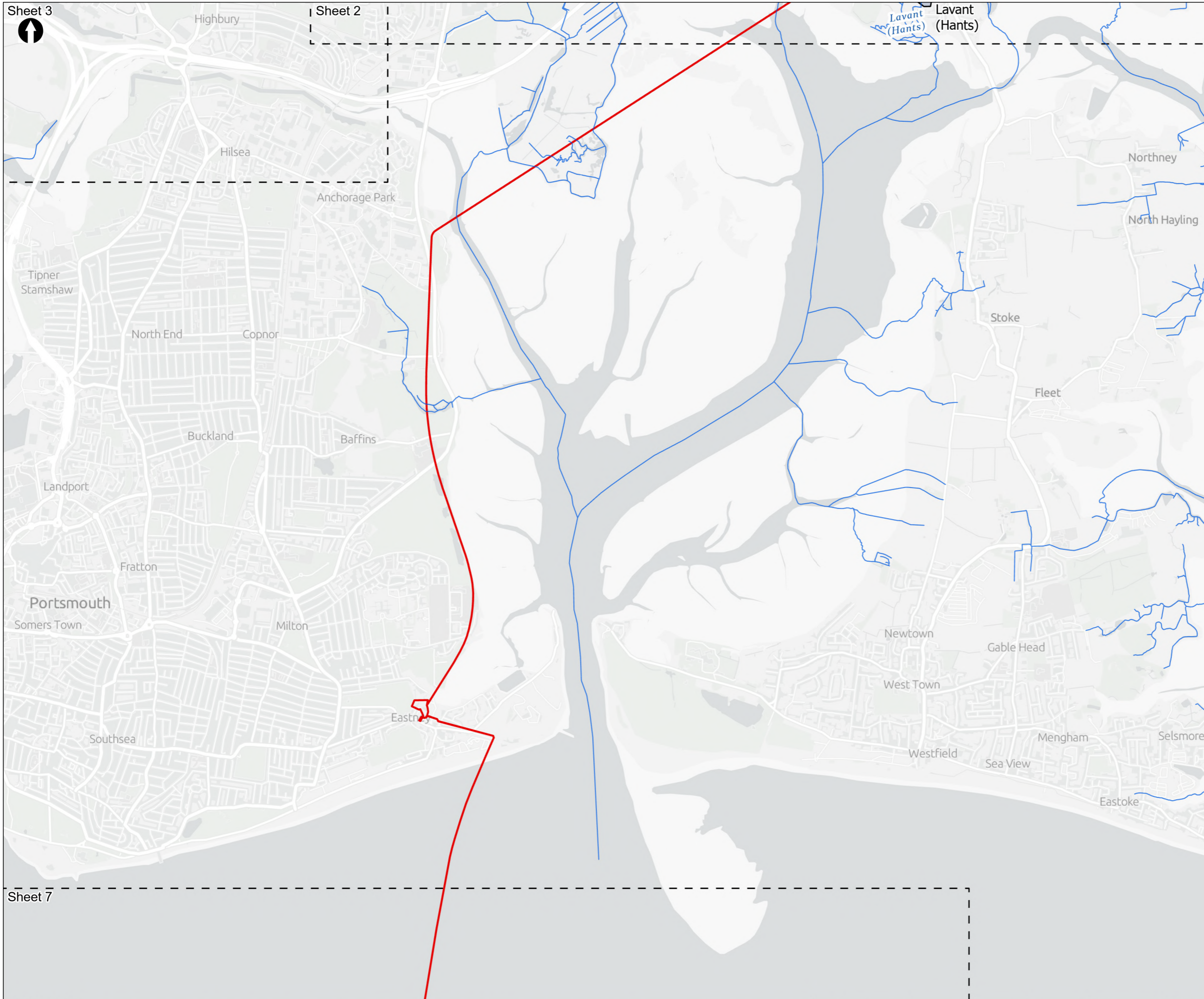


Figure 8.51
 Watercourses and watercourse crossings
 Sheet 5 of 7

Drawn MW	GIS Checked DL	Checked MP	Approved AK
Scale at A3 1:30,000	Status Final	Revision 05	Security STD

Drawing Number
PC5223-RHD-ES-ZZ-D-Z-0075





Order Limits
 Sheet Extent Boxes 1:30K
 Watercourse
WFD
 River Water Body Catchment

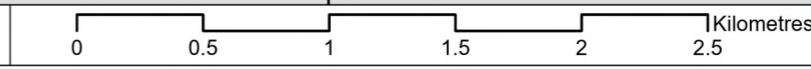
Coordinate system: British National Grid; Datum: OSGB 1936
 Data sources: © Crown copyright and database rights 2026 Ordnance Survey 0100031673. Sources: Esri, TomTom, Garmin, FAO, NOAA, USGS, © OpenStreetMap contributors, and the GIS User Community, Contains OS data © Crown Copyright and database right 2026. Contains data from OS Zoomstack

PROJECT TITLE
 Hampshire Water Transfer and Water Recycling Project



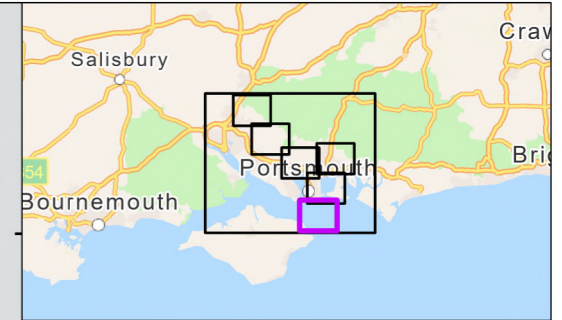
Figure 8.51
 Watercourses and watercourse crossings
 Sheet 6 of 7

Drawn MW	GIS Checked DL	Checked MP	Approved AK
Scale at A3 1:30,000	Status Final	Revision 05	Security STD

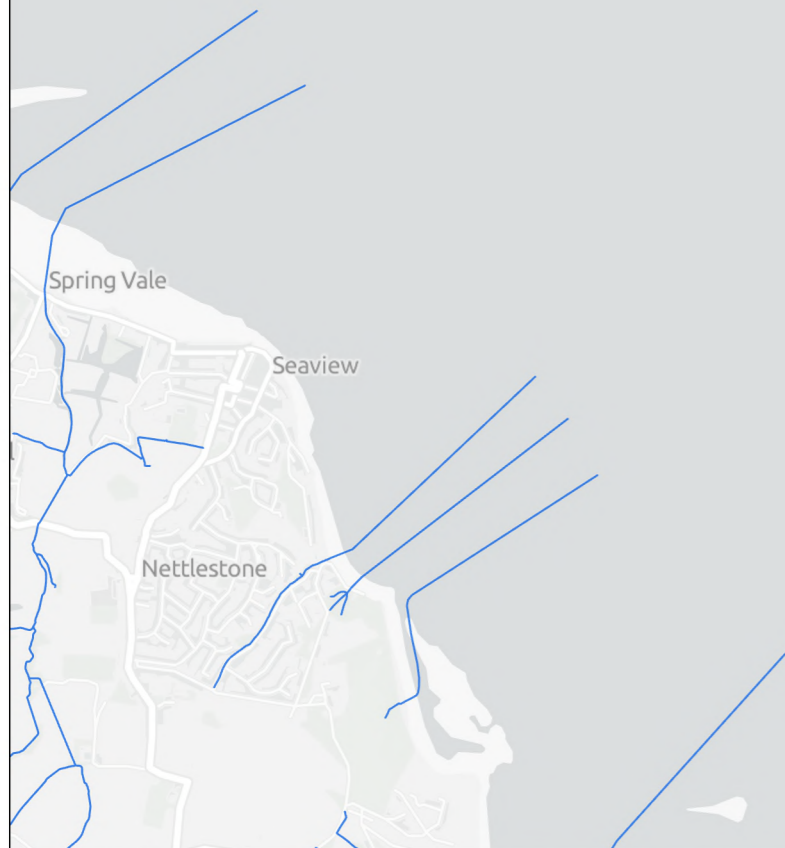




Sheet 6



- Order Limits
- Sheet Extent Boxes 1:30K
- Watercourse



Coordinate system: British National Grid; Datum: OSGB 1936
 Data sources: © Crown copyright and database rights 2026 Ordnance Survey 0100031673. Sources: Esri, TomTom, Garmin, FAO, NOAA, USGS, © OpenStreetMap contributors, and the GIS User Community, Contains OS data © Crown Copyright and database right 2026. Contains data from OS Zoomstack

PROJECT TITLE
 Hampshire Water Transfer and Water Recycling Project



Figure 8.51
 Watercourses and watercourse crossings
 Sheet 7 of 7

Drawn MW	GIS Checked DL	Checked MP	Approved AK
Scale at A3 1:30,000	Status Final	Revision 05	Security STD

